



Canadian Food  
Inspection Agency

Agence canadienne  
d'inspection des aliments

Environment and  
Climate Change Canada

Environnement et  
Changement Climatique Canada

Fisheries and Oceans  
Canada

Pêches et Océans  
Canada

# Canadian Shellfish Sanitation Program Classification and Management of Shellfish Areas

Island Marine Aquatic Working Group  
Fisheries & Oceans Canada  
2017



Canadian Shellfish  
Sanitation Program

Programme canadien de contrôle  
de la salubrité des mollusques

Canada

## Presentation Outline

- CSSP refresher
- Shellfish area classification
  - Pacific Regional Interdepartmental Shellfish Committee
- Conditional Management Plans (CMPs)
- Future CSSP program delivery
- Staying informed about current program delivery



Canadian Shellfish  
Sanitation Program

Programme canadien de contrôle  
de la salubrité des mollusques

Page 2

Canada

## Quick refresher – what is the CSSP?

- Bivalve shellfish are filter feeders that can gather and store contaminants from pollution sources and from naturally occurring toxins
- The quality of the marine environment has a direct impact on the safety of bivalve shellfish for consumption
- To protect public health, the Canadian Shellfish Sanitation Program (CSSP) classifies shellfish harvesting areas for their sanitary suitability and conducts water quality and biotoxin monitoring of those areas
- CSSP is delivered by the Canadian Food Inspection Agency (CFIA), Fisheries and Oceans Canada (DFO) and Environment & Climate Change Canada (ECCC)
- More information on CSSP can be found at:  
[www.dfo-mpo.gc.ca/shellfish-mollusques/ihs-rim-eng.htm](http://www.dfo-mpo.gc.ca/shellfish-mollusques/ihs-rim-eng.htm)



Canadian Shellfish  
Sanitation Program

Programme canadien de contrôle  
de la salubrité des mollusques

Page 3

Canada

## New PRISC Recommendations – October 2016 and April 2017

- Area 10
  - Margaret Bay – New Closure 10.1 (Oct 2016)
- Area 14
  - Qualicum Beach- Closure 14.6 revoked (Oct 2016)
  - Hall Rd, Columbia Beach – Closure 14.26 revoked (Oct 2016)
  - Qualicum Beach – Closure 14.31 expanded and amalgamation (Oct 2016)
- Area 18
  - Burgoyne Bay, Saltspring Island - Closure 18.33 expanded (Oct 2016)
- Area 20
  - Sooke Bay - New Closure 20.9 (Oct 2016)
- Area 23
  - Mouth of Ucluelet Harbour – Closure 23.2 expanded (Oct 2016)
- Area 25
  - Plumper Harbour, Nootka Island - Closure 25.31 revoked (Oct 2016)
  - Head Bay, Tlupana Inlet – New Closure 25.32 (Oct 2016)
  - Moutcha Bay, Tlupana Inlet – New Closure 25.33 (Oct 2016)
  - Tlupana Inlet, Nootka Sound – New Closure 25.34 (Oct 2016)
  - Tlupana Inlet, Nootka Sound – Closure 25.4 revoked (Oct 2016)
  - Newton Cove, Espinosa Inlet – New Closure 25.35 (April 2017)
- Area 26
  - Union Island, Kyuquot Sound - New Closure 26.25 (April 2017)



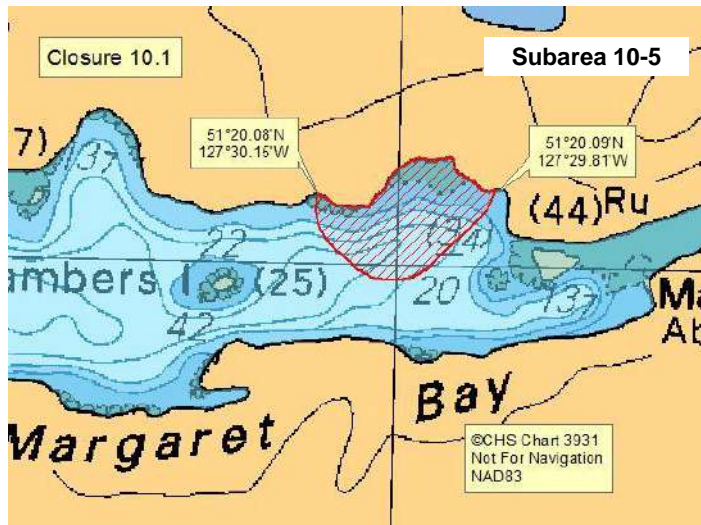
Canadian Shellfish  
Sanitation Program

Programme canadien de contrôle  
de la salubrité des mollusques

Page 4

Canada

## New Sanitary Closure 10.1 – Margaret Bay



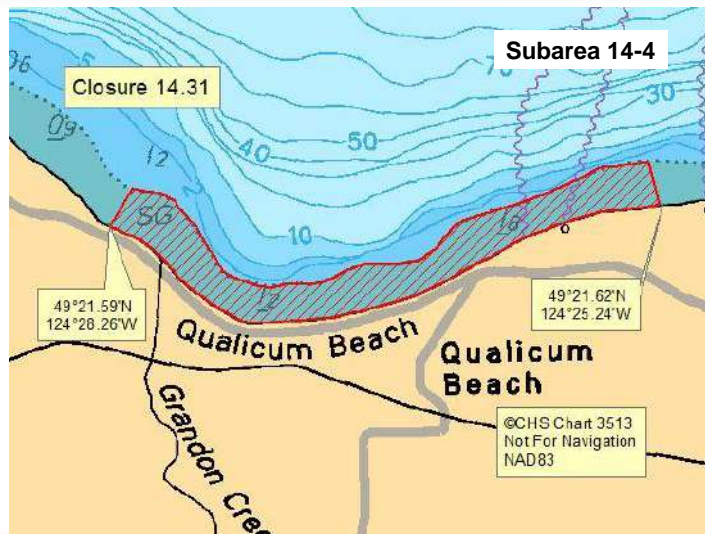
Canadian Shellfish  
Sanitation Program

Programme canadien de contrôle  
de la salubrité des mollusques

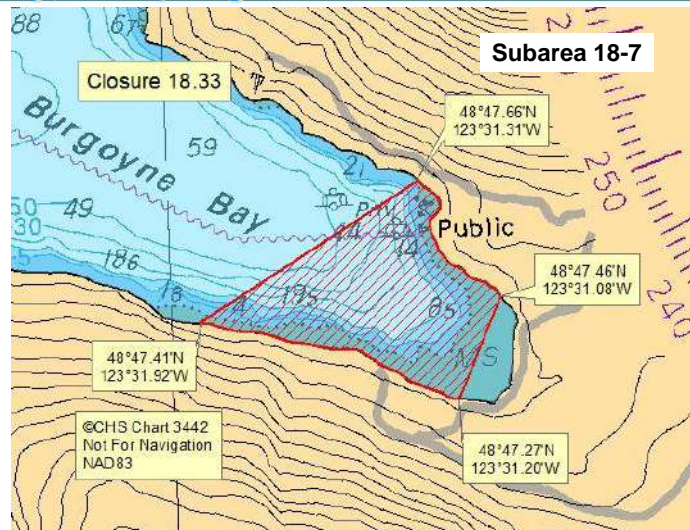
Page 5

Canada

## Expanded and Amalgamate Sanitary Closure 14.31 – Qualicum Beach



## Expanded Sanitary Closure 18.33 – Burgoyne Bay, Saltspring Island



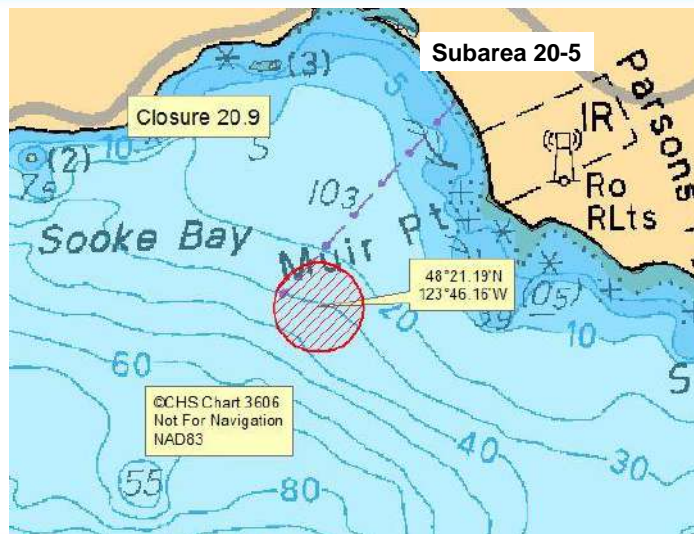
Canadian Shellfish  
Sanitation Program

Programme canadien de contrôle  
de la salubrité des mollusques

Page 7

Canada

## New Sanitary Closure 20.9 – Sooke Bay



Canadian Shellfish  
Sanitation Program

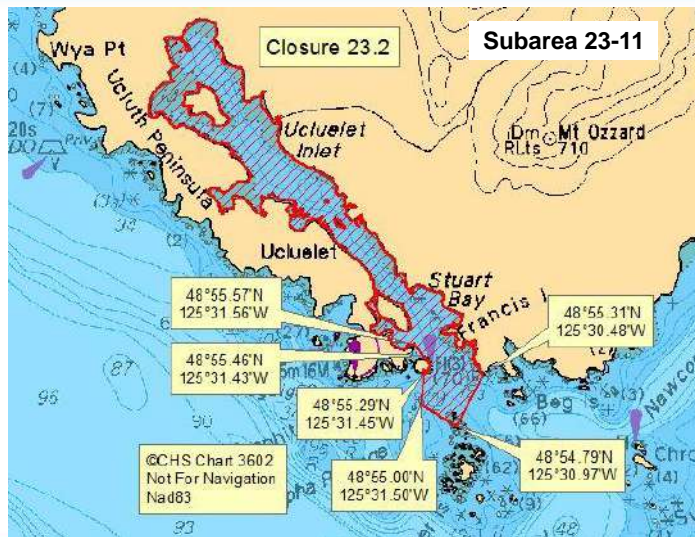
Programme canadien de contrôle  
de la salubrité des mollusques

Page 8

Canada



## Expanded Sanitary Closure 23.2 – Mouth of Ucluelet Harbour



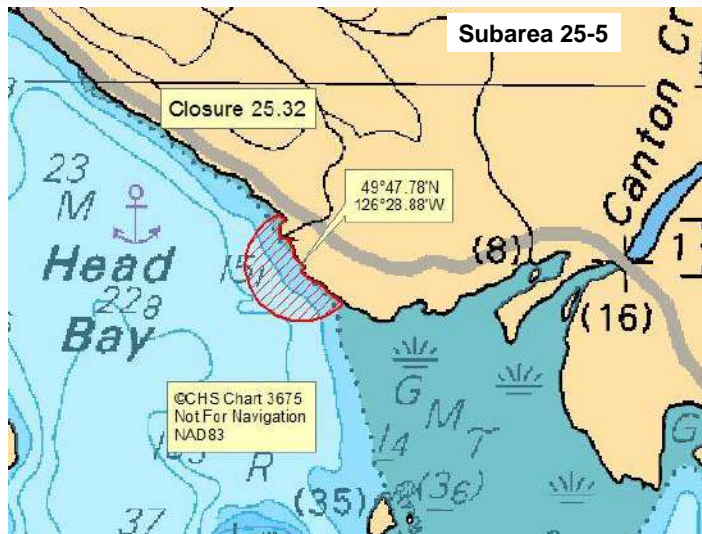
Canadian Shellfish  
Sanitation Program

Programme canadien de contrôle  
de la salubrité des mollusques

Page 9

Canada

## New Seasonal Sanitary Closure 25.32 – Head Bay, Tlupana Inlet



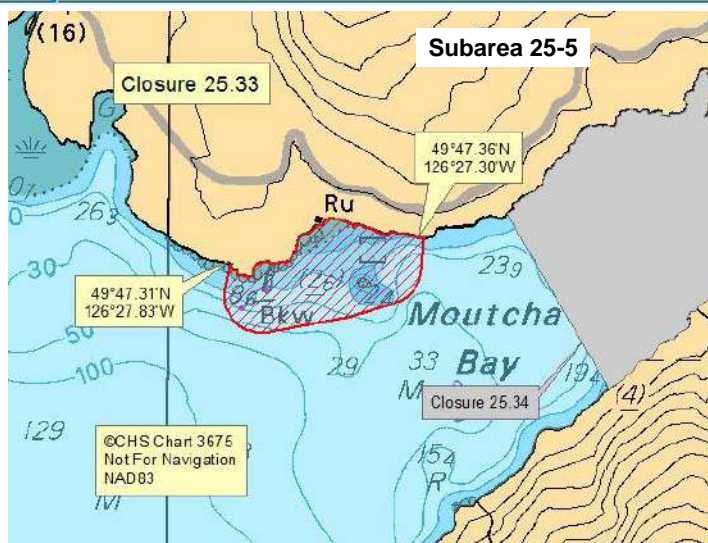
Canadian Shellfish  
Sanitation Program

Programme canadien de contrôle  
de la salubrité des mollusques

Page 10

Canada

## New Sanitary Closure 25.33 – Moutcha Bay, Tlupana Inlet



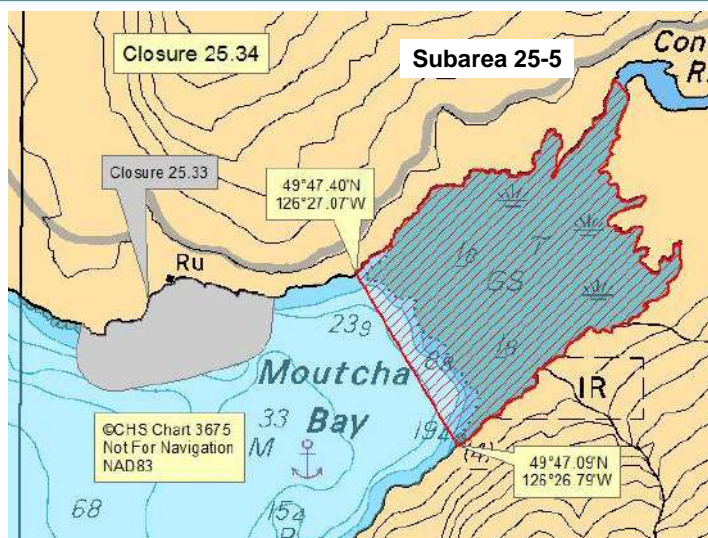
Canadian Shellfish  
Sanitation Program

Programme canadien de contrôle  
de la salubrité des mollusques

Page 11

Canada

## New Sanitary Closure 25.34 – Tlupana Inlet, Nootka Sound



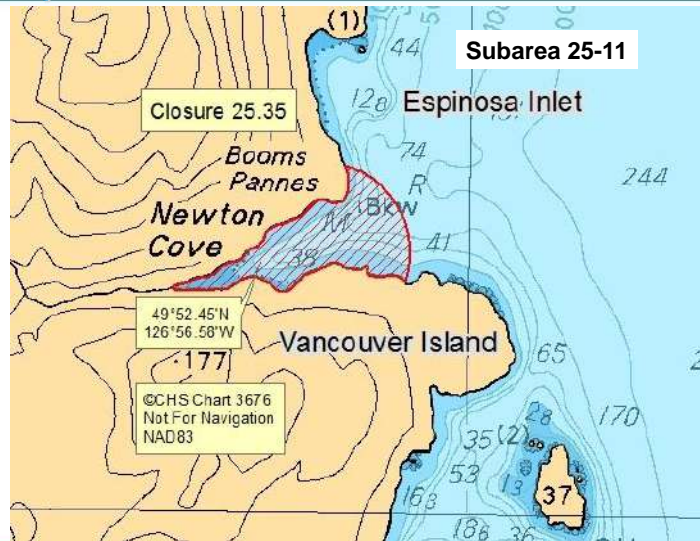
Canadian Shellfish  
Sanitation Program

Programme canadien de contrôle  
de la salubrité des mollusques

Page 12

Canada

## New Sanitary Closure 25.35 – Newton Cove, Espinosa Inlet



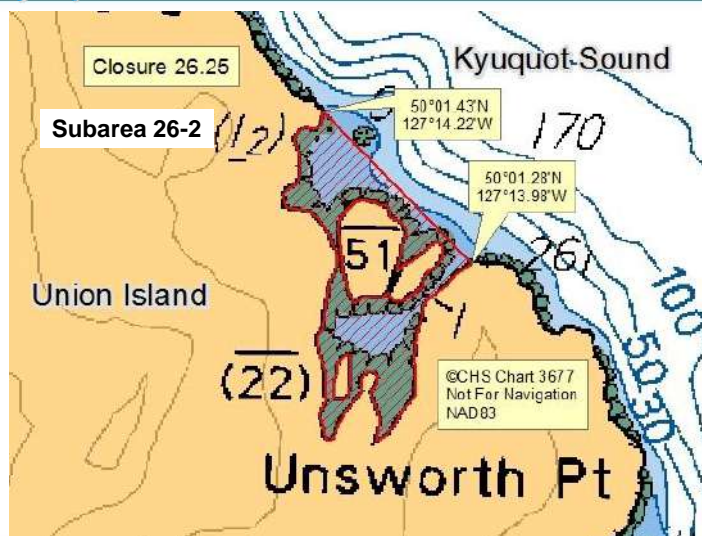
Canadian Shellfish  
Sanitation Program

Programme canadien de contrôle  
de la salubrité des mollusques

Page 13

Canada

## New Sanitary Closure 26.25 – Union Island, Kyuquot Sound



Canadian Shellfish  
Sanitation Program

Programme canadien de contrôle  
de la salubrité des mollusques

Page 14

Canada



## Conditional Management Plans (CMP)

- Conditional Management Plan - is a signed agreement with relevant parties for the management of shellfish in conditionally classified areas (Wastewater Treatment Plant and Rainfall Trigger Areas near shellfish growing areas)
- CMPs for WWTPs:
  - Ladysmith, renewal 2017-2018
  - Chemainus and Crofton 2017-2020
  - French Creek 2016-2019
- CMP for Rainfall Trigger:
  - Baynes Sound (June 1, 2017 – May 31, 2018)



Canadian Shellfish  
Sanitation Program

Programme canadien de contrôle  
de la salubrité des mollusques

Page 15

Canada

## Future CSSP program delivery

- CSSP partners recently completed a review of known current harvesting activity and CSSP delivery in 1,369 bivalve shellfish harvest areas across Canada
  - Purpose was to determine if CSSP program resources were applied where they are needed to support food safety
- This review identified:
  - There are classified harvesting areas in your vicinity where CSSP is not being delivered, where harvest may or may not be occurring
  - Possible knowledge gaps regarding type and level of harvesting at certain shellfish harvest areas



Canadian Shellfish  
Sanitation Program

Programme canadien de contrôle  
de la salubrité des mollusques

Page 16

Canada



## Harvest shellfish from areas where CSSP is delivered

- Shellfish harvested from sites that are monitored by CSSP have the lowest risk of foodborne illness
  - There are potential food safety risks associated with consumption of shellfish harvested from areas where there is no information about the levels of contaminants in water and shellfish
- Harvest shellfish only in areas that are monitored and approved
- More information on shellfish food safety can be found at [www.hc-sc.gc.ca/fniah-spnia/pubs/promotion/\\_safety-salubrite/fish-poisson-eng.php](http://www.hc-sc.gc.ca/fniah-spnia/pubs/promotion/_safety-salubrite/fish-poisson-eng.php)
- To find out if an area is safe for harvesting contact your local DFO area office



Canadian Shellfish  
Sanitation Program

Programme canadien de contrôle  
de la salubrité des mollusques

Page 17

Canada

## Seeking information

- We would like to work with you to confirm information on shellfish harvesting in specific areas
- Confirming the location, type and level of harvesting activity, and existence of harvestable shellfish in these areas will help us make decisions on where to deliver the CSSP program in the future



Canadian Shellfish  
Sanitation Program

Programme canadien de contrôle  
de la salubrité des mollusques

Page 18

Canada

## Seeking Information

- To guide our analysis, we would appreciate obtaining more information about the harvesting activities in your area. Examples include:
  - Where specifically are you harvesting shellfish?
  - What is the nature of your harvesting from this area?
  - What species of shellfish do you harvest?
  - What volume of shellfish do you harvest?
  - Is there any other information about shellfish in this area you feel might be important (e.g., shellfish disease, invasive species)?
- An on-line survey will be available for your use shortly. Alternatively, please contact:
  - Juanita Rogers
  - DFO Program Coordinator, South Coast Invertebrates
  - 250-756-7268 or [juanita.rogers@dfo-mpo.gc.ca](mailto:juanita.rogers@dfo-mpo.gc.ca)



Canadian Shellfish  
Sanitation Program

Programme canadien de contrôle  
de la salubrité des mollusques

Page 19

Canada

## Staying informed about current program delivery

- DFO Fishery Notice System
- To receive automatic Fishery Notices (DFO):
  - Sanitary Closures
  - PSP (red tide)/Biotxin Notices
  - Aboriginal, Commercial and Recreational Fishery Notices
  - Licensing Information
- Register at:  
[http://www-ops2.pac.dfo-mpo.gc.ca/fns\\_reg/index.cfm](http://www-ops2.pac.dfo-mpo.gc.ca/fns_reg/index.cfm)



Canadian Shellfish  
Sanitation Program

Programme canadien de contrôle  
de la salubrité des mollusques

Page 20

Canada

## Staying informed (continued)

- DFO website changed to be more user friendly and to upgrade to modernized design templates
- Revamp of sanitary and biotoxin information on CSSP sites; visit: <http://www.pac.dfo-mpo.gc.ca/fm-gp/contamination/index-eng.html>
- New Recreational Site, including Sports Fishing Guide and sanitary / biotoxin information; visit: <http://www.pac.dfo-mpo.gc.ca/fm-gp/rec/index-eng.html>
  - Subarea, biotoxin information and sanitary closures combined in one table
  - CSSP Coordinator contact information on each sanitary / biotoxin page, easier to navigate



Canadian Shellfish  
Sanitation Program

Programme canadien de contrôle  
de la salubrité des mollusques

Page 21

Canada

## Be Safe – Check Before You Harvest!

**DFO CSSP Coordinator:**

**Elysha Gordon**

Tel: 250-756-7192

[Elysha.Gordon@dfo-mpo.gc.ca](mailto:Elysha.Gordon@dfo-mpo.gc.ca)



Canadian Shellfish  
Sanitation Program

Programme canadien de contrôle  
de la salubrité des mollusques

Page 22

Canada